

LOADRITE™

DATA SHEET

X-WEIGH 2350™ EXCAVATOR SCALE

The LOADRITE™ X-WEIGH 2350™ couples accurate dynamic weighing with simple and easy to use data management capabilities all in an efficient design. Its keypad is designed to optimize functionality and efficiency, enabling fast and easy data entry with minimum errors. The LOADRITE™ X-WEIGH 2350™ provides the ability to track individual jobs, trucks, customers and products. The data recorded can be viewed and customized in a range of formats. Such multi-layered management capabilities make the LOADRITE™ X-WEIGH 2350™ the ideal option for those interested in monitoring the performance of their operation.

Supported languages: English, French, Spanish, German, Portuguese, Dutch, Swedish, Turkish, Danish, Norwegian, Italian

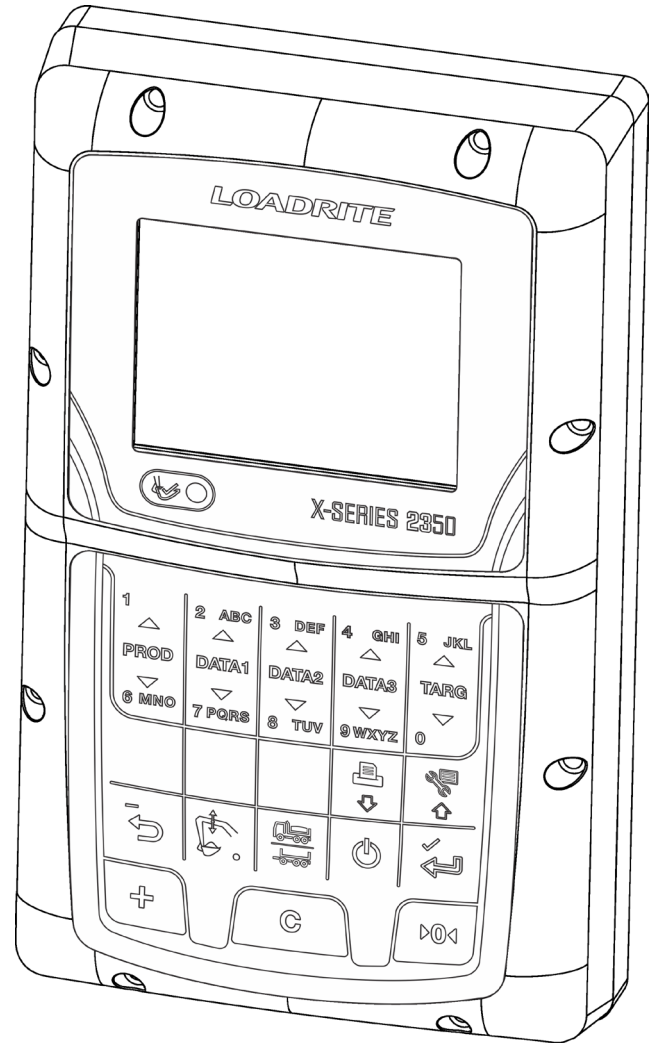
Warranty: 1 year parts & labour

SYSTEM COMPONENTS

ARM POSITION SENSORS	LR908 ROTARY
CHASSIS ORIENTATION	LR966 TILT SENSOR
PRESSURE TRANSDUCER	2 X LC965C
REMOTE BUTTON INPUTS	2
LP950 PRINTER	YES
BUCKET INTERLOCK SWITCH	YES
DATA LOGGER SUPPORT	YES
MODEM SUPPORT	YES (RADIO/WIFI/GSM)

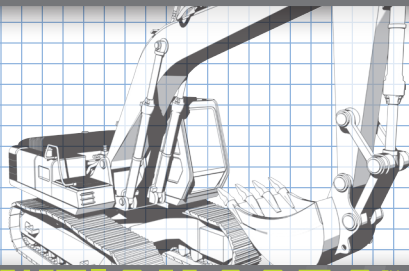
WEIGHING FUNCTIONS

DYNAMIC WEIGHING	YES
SPLIT FUNCTION	YES
TARGET MODE	YES
OVER TARGET FUNCTION	YES
TARE FUNCTION	YES
TIP OFF WEIGHING	NO
MULTIPLE SCALES	4
BUCKET OVERLOAD WARNING	YES
ZERO FUNCTION	YES
RECALL/SUBTRACT FUNCTION	YES
STATIC WEIGH FUNCTION	NO



DATA FUNCTIONS

PRODUCT NAMES	20
PRODUCT SHORT TOTALS	20
PRODUCT LONG TOTALS	20
PRODUCT BUCKET COUNT	20
CUSTOMIZABLE DATA FIELDS	3
TOTAL NUMBER OF DATA ITEMS	1200
AUTO TARGET FUNCTION	YES
AUTO TARE FUNCTION	YES
OPERATOR LOG IN	YES (20 LOG INS)
ON SCALE REPORTING	YES



LOADRITE™ DATA SHEET

X-WEIGH 2350™ EXCAVATOR SCALE

POWER REQUIREMENTS

SUPPLY VOLTAGE	12 TO 32V DC
CURRENT CONSUMPTION	160MA TYPICAL 350MA MAX. 3A MAX WITH LP950 PRINTER
POWER SUPPLY PROTECTION	AUTOMOTIVE POWER SUPPLY TRANSIENT SUPPRESSION EXCEEDS SAE SPECIFICATIONS FOR DC AUTOMOTIVE POWER SUPPLY TRANSIENTS

PHYSICAL SPECIFICATION

DISPLAY	100 MM (4 IN) QVGA
WEIGHT	1.5 KG (3.3 LBS)
DIMENSIONS	W145 X L240 X D110 MM (5.7 X 9.4 X 4.3 IN)

ENVIRONMENTAL SPECIFICATION

OPERATING TEMPERATURE	-10°C TO 50°C (14°F TO 122°F)
STORAGE TEMPERATURE	-50°C TO 100°C (-58°F TO 212°F)
ENVIRONMENTAL PROTECTION	INDICATOR PROTECTED TO IP54 TRIGGER AND PRESSURE TRANSDUCERS PROTECTED TO IP69
HALT (HIGHLY ACCELERATED LIFE TESTING) QUALIFIED	USING EXTREMES OF -90°C AND +120°C AND WITH ALL-AXIS RANDOM VIBRATION OVER 40G